



## ATTENDS PRODUCTS ARE TESTED AND APPROVED TO BE SKIN FRIENDLY BY PRODERM GMBH, HAMBURG, GERMANY

People who need incontinence products very often use them 24 hours a day. This means the skin is continuously in contact with the surface of the products. That is why it is so important to select skin friendly materials. But even more importantly, if the incontinence pad leaves the skin wet, this might cause skin irritation or even skin breakdown, causing a major source of distress for the user, and potentially, a high cost of caring for the care-giver.

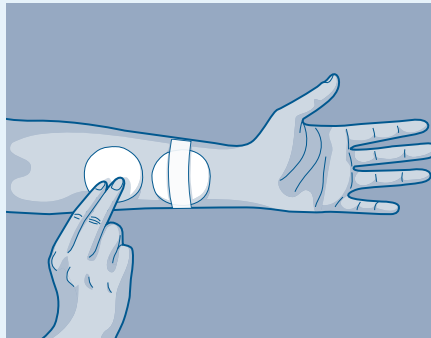
proderm has tested the skin tolerance and the effects on the skin of Attends incontinence products in the following three ways:

### 1. Dry Patch Test



Application of small sections (of the dry product or materials that are in contact with the skin) placed on the person's back for 3 x 24 hours daily visual dermatological grading for any skin reaction and rated by proderm on a scale.

### 2. Wet Patch Test



Application of a section of a wet Attends product with synthetic urine for 3 x 24 hours. The effects on the skin are visually evaluated and rated by proderm together with the TEWL\* measurement. Note that the wetness of the products reflects the rewet\*\* results that we use to measure the performance of our products and simulate reality.

### 3. In Use Evaluation



>200 users of Attends incontinence products living in institutional settings were involved in an in use evaluation over a 4 week period. The effects on the skin were monitored by clinical staff and visually evaluated and rated using a recognized skin assessment tool.

Note that not all products need to undergo these three tests, some products have identical materials and core technology, meaning one test result can be used for multiple products. All exclusive materials are however subject to at least a Dry Patch Test.

\* Transepidermal Water Loss: a tool that measures if skin has lost moisture, which is a sign of deteriorating skin health.

\*\* Rewet tests measure the amount of liquid that returns (under pressure) to the surface of the pad after a gush of liquid has entered the pad. For more information see the 'Attends Heavy Product Range Brochure'.

## Conclusion

The core technology of Attends incontinence products delivers excellent leakage protection and skin dryness to the user. The results from the proderm testing (Dry and Wet Patch Test and the in use evaluation) show that Attends products are skin friendly.

This is why proderm has granted Attends the use of the Quality seal of approval on its products\*



\* Products tested/approved: Attends For Men, Soft, Lady Night Pad, Contours, Slip Regular, Slip Active, Slip Classic, Flex, Adjustable, Pull-on and Cover-Dri.

## We have to earn the seal every day ...

Every day, 25 full trucks of products leave the Attends factory in Aneby, Sweden, for delivery to customers all over Europe. To keep our high quality standards, we follow up on every product complaint that comes back to us. All complaints related to our users' skin health we are contractually obliged to share with proderm. This creates full transparency between Attends and proderm. Should there be any increase in skin health complaints related to a specific product category, proderm expects a thorough follow-up and correction of the issue.

We are proud to state that since the start of the contract between Attends and proderm (June 2010), there has not been any need for corrective action.

## References

proderm GmbH, Kiebitzweg 2, 22869 Schenefeld / Hamburg, Germany.  
www.proderm.de

proderm Study Numbers; 09.0363-99, 10.0240-99, 10.0239-06, 11.0489-11, 14.0062.02, 15.0022-02, 15.0406-02, 18.0217-02, 18.0346-11, 19.0384-02, 20.0348-02, 21.02221-02, October 2009 – May 2021.

In-use Evaluation Reports; Attends Healthcare, August 2010, February 2012 and June 2014.

All documentation (reports, certificates, protocols, test study results a.o) are available on request.  
Date of last revision: **June 2022**